

NDICLED3R-15LNHC-TL-CP



3-inch new construction downlight with a patented 3-in-1 design that supports a variety of options for a broad range of applications.

Color: N/A

Weight: 10.4 lbs

Project:

Type:

Prepared By:

Date:

Driver Info

| | |
|--------------|------------------|
| Type: | Constant Current |
| 120V: | 0.12A |
| 208V: | 0.08A |
| 240V: | 0.07A |
| 277V: | 0.06A |
| Input Watts: | 15W |
| Efficiency: | N/A |

LED Info

| | |
|-----------------|------------|
| Watts: | 15W |
| Color Temp: | 4000K |
| Color Accuracy: | 90 CRI |
| L70 Lifespan: | 100,000 |
| Lumens: | 422 - 1019 |
| Efficacy: | 28 LPW |

Technical Specifications

Listings

UL Listing:

Suitable for wet locations in a covered ceiling (adjustable models suitable for damp locations).

Chicago Plenum Compliance:

To be compliant with City of Chicago Environmental Air (CCEA), all recessed luminaire wiring must be enclosed in airtight metal, with temperature rated seals and gaskets separating the fixture from the plenum air space.

Optical

Photometrics:

Photometrics are based on prorated reports. Contact the RAB Lighting Design department for the most up-to-date data.

Optics:

High-efficiency TIR optics. Available as a downlight (80° or 50° beam), adjustable (40° or 20° beam with 40° vertical adjustment and 360° rotation), or a wall washer.

Construction

IC Rating:

Suitable for direct contact with insulation

Trim:

Accepts trimless cones (spackle flange included)

Housing Component:

This component must be ordered with New Construction Round Trim Module in order to make a complete fixture.

Cold Weather Starting:

Minimum starting temperature is -40° F (-40° C)

Maximum Ambient Temperature:

Suitable for use in 104° F (40°C) ambient temperatures

Housing:

Cold-rolled steel and aluminum

Installation:

Nailer bar and butterfly brackets included; C-channels optional for acoustic tiles

Green Technology:

Mercury and UV free. RoHS compliant components.

LED Characteristics

Lifespan:

100,000-hour LED lifespan based on IES LM-80 results and TM-21 calculations.

Color Consistency:

2-step u'-v' Circle Tolerance, previously referred to as 2-step MacAdam Ellipse, achieves consistent fixture-to-fixture color (ANSI standard C78.377.2015)

Electrical

Driver:

Constant Current, Class 2, 120-277V, 50/60Hz, 120V: 0.12A, 208V: 0.08A, 240V: 0.07A, 277V: 0.06A

Dimming Driver:

Universal dimming driver supports TRIAC, ELV and 0-10V.

Surge Protection:

2kV

Performance:

80° white: 897 lumens, 61 lm/W
50° white: 928 lumens, 64 lm/W
40°A white: 985 lumens, 68 lm/W
20°A white: 970 lumens, 66 lm/W
WW white: 617 lumens, 42 lm/W

80° matte: 902 lumens, 62 lm/W
50° matte: 935 lumens, 64 lm/W
40°A matte: 1019 lumens, 70 lm/W
20°A matte: 1003 lumens, 69 lm/W
WW matte: 650 lumens, 45 lm/W

80° black: 693 lumens, 48 lm/W
50° black: 839 lumens, 58 lm/W
40°A black: 943 lumens, 65 lm/W
20° black: 944 lumens, 65 lm/W
WW black: 422 lumens, 29 lm/W

Other

Aperture Size:

3" Rough-In

Special Order:

Available in battery backup option by special request. Contact RAB customer service to order.

Warranty:

RAB warrants that our LED products will be free from defects in materials and workmanship for a period of five (5) years from the date of delivery to the end user, including coverage of light output, color stability, driver performance and fixture finish.

Country of Origin:

Designed by RAB in New Jersey and assembled in the USA by RAB's IBEW Local 3 workers.

Buy American Act Compliant:

This product is a COTS item manufactured in the United States, and is compliant with the Buy American Act.

Recovery Act (ARRA) Compliant:

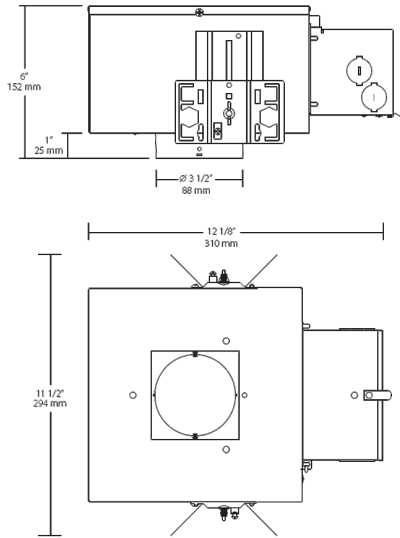
This product complies with the 52.225-21 "Required Use of American Iron, Steel, and Manufactured Goods-- Buy American Act-- Construction Materials (October 2010).

GSA Schedule:

Suitable in accordance with FAR Subpart 25.4.

NDICLED3R-15LNHC- TL-CP

Dimensions



Features

- 3-in-1 housing accommodates downlight, adjustable or wall washer
- Universal driver supports TRIAC, ELV and 0-10 dimming
- IC-rated, Certified Air Tight
- 100,000 hour LED lifespan
- 5-year no-compromise warranty

Ordering Matrix

| Family | Size | Shape | Wattage | Driver | Color Temp | CRI | Trim | Installation |
|---------|--------|-----------|----------------------|---|---|-------------------------------|--|---|
| NDICLED | 3 | R | 15 | L | N | HC | TL | CP |
| | 3 = 3" | R = Round | 25 = 25W 15 = 15W | D = TRIAC, ELV, 0-10V Dimming L = Lutron | N = 4000K (Neutral) YN = 3500K (Warm Neutral) Y = 3000K (Warm) YY = 2700K (Residential Warm) | Blank = 80 CRI HC = 90 CRI | Blank = Accepts cones with trim TL = Accepts trimless cones (spackle flange included) | Blank = Standard CP = Chicago Plenum |